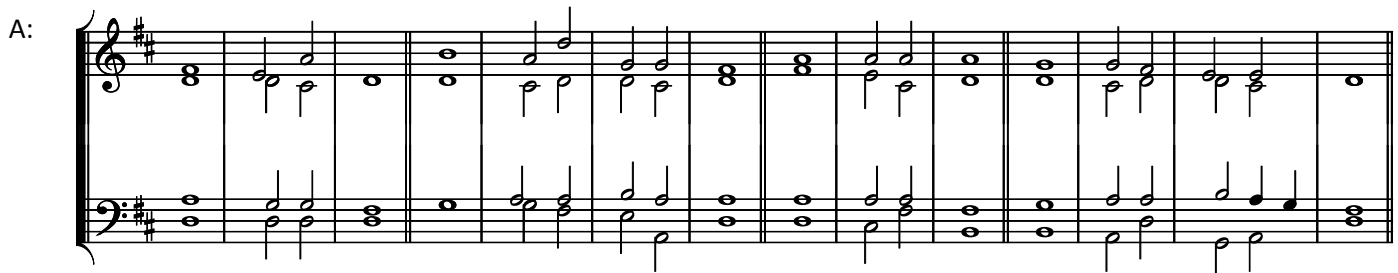
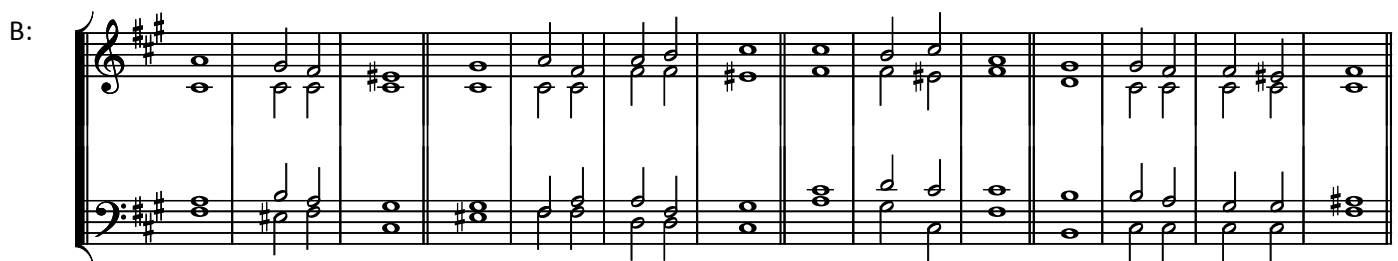


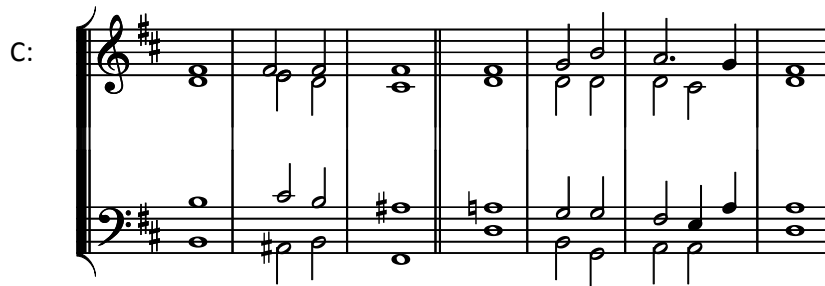
## The Highway Code (Anglican Chant as recorded by The Master Singers, 1966)



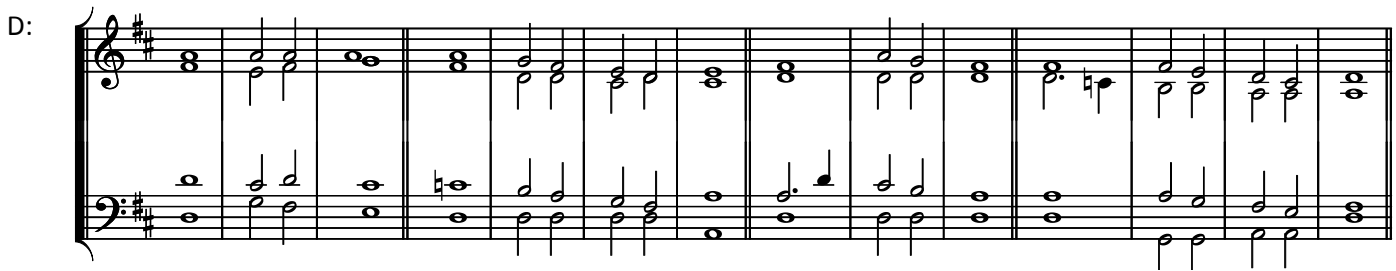
- A: 1. The Highway | Code, Part | One. : The | **Road** | User On | Foot.  
2. Walk-|ing a-|long, : where there is a pave-e-ment, or |ade·quate | footpath, | use it.  
3. On a pave-e-ment or footpath, do not walk next to the kerb with your | back to the | traffic. : Do not step into the | road with·out | **first** | looking.  
4. Where there is no | ade·quate | footpath, : walk on the right of the | road to face | on·com-ing | traffic.  
5. Do not loiter in the roadway, or | walk a·long | cycle tracks. : A marching body on the road should | keep on the | left hand | side.  
6. It should have lookouts at suitable distances at the | front and | rear, : and at night they should carry lights; white at the front of the | column, and | red · at the | rear.



- B: 7. Always use subways, foot bridges, pedestrian crossings or central refuges | when pro-|-vided. : Otherwise, cross where you have a clear | view of the | road both | ways.  
8. Take extra care if your | view is | limited : by sta-ti-on-ary vehicles, or | other ob-|-struc-ti-|-ons.  
9. Be-|-fore you | cross, : stop at the kerb, look right, look | left and | right a-|-gain.  
10. Do not cross until the | road is | clear, : then cross at right angles, keeping a careful | look out | all the | time.



- C: 11. When you have stepped off the kerb onto a | zebra | crossing, : which must have black and white stripes, | studs and | light-ed | beacons,  
 12. You have the | right of | way, : but allow approaching vehicles ample time to give way, especially if the | road is | wet or | icy.  
 13. When crossing the | road at | junc-ti-ons, : look out for | vehic·les | turning the | corner.



- D: 14. Do not cross the road, either at a zebra | crossing or | elsewhere, : against a signal to stop by a police | officer con-| -trolling | traffic.  
 15. Do not get on or off a bus or tram while it is moving, or when it is not at a recogniz-ed stopping place. Do not step out suddenly from behind a sta-ti-on-ary or slowly moving bus or tram. If you want to get on one at a request stop, give a clear signal | for it to | stop, : and do not step into the | road un-| -til it has | stop-ped.  
 16. Prepared by the | Ministry Of | Transport : and | Civil | A-vi-|-a-ti-on,  
 17. And the | Central | Office : of | In-for-|-ma-ti-|on.

- A: from Havergal in E  
 B: from Hopkins in G minor  
 C: from Felton in E flat  
 D: from J. T. Harris in E flat